

BRUNDAGE MINI STORAGE, LTD
R.A. = 93,273 SQ. FT.

BEGIN S.P. 006-30-0041
BEGIN JEFFERSON HWY W BND (JHW)
P&A B/L (JH) 127+61.71
P&A B/L (ML) 122+41.52

CV-7C
EQUITY ONE (LOUISIANA
PORTFOLIO) LLC, A FLORIDA
CORPORATION

SECTION 43
SECTION 44

CLEARVIEW PARKWAY
STATE PROJECT NO. 006-01-0021

CLEARVIEW PKWY
S.P. 006-01-0021
STA. 123+01.88
JEFFERSON HWY
STA. 127+74.58

NEW ORLEANS
PUBLIC BELT
RAILROAD
COMMISSION

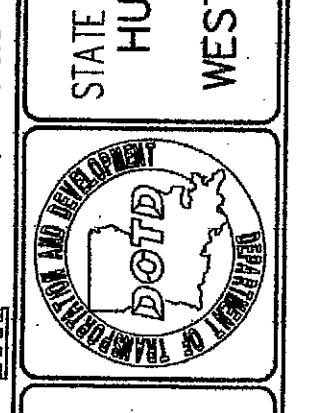
SHEET NO.	2083
DATE	03/30/06
COMPUTED BY	
DRAWN BY	JPT
SCALE	1" = 50'
FILE NO.	
R/W SHEET NO.	21
JEFFERSON PARISH	
PROJECT NO.	006-01-0021

RIGHT OF WAY MAP	
STATE PROJECT NO.	006-01-0021 & 006-03-0041
DRAWN BY	HUEY P. LONG BRIDGE WIDENING
PROJECT NO.	U.S. 90
APPROACH	WESTBANK & EASTBANK APPROACH



RIGHT OF WAY MAP
STATE PROJECT NO. 006-01-0021 & 006-03-0041
DRAWN BY: HUEY P. LONG BRIDGE WIDENING
PROJECT NO.: U.S. 90
APPROACH: WESTBANK & EASTBANK APPROACH

REYNOLDS SURVEYING
COMPANY, L.L.C.
606 BENDROCK STREET
LAFAYETTE, LA 70508
985-666-8886



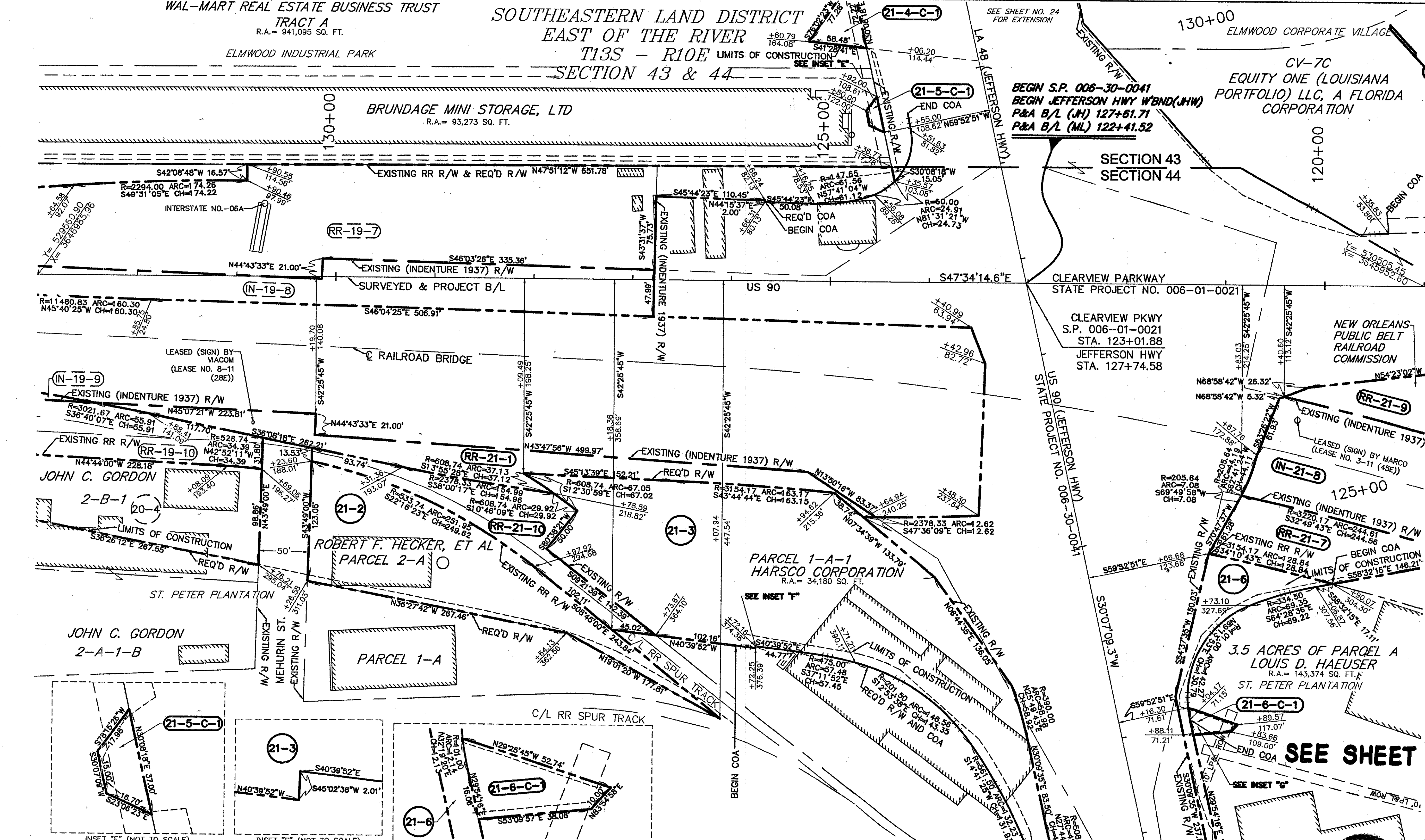
REVISIONS

DATE

DATE

DATE

S:\Land Projects R2\ldwg\11490_RDM.dwg\11490_RDM_EB-08072006.dwg 9/18/2006 1:51:08 PM CDT



INDENTURE AREA	OWNER	ACQUISITION	AREA
21-6-C-1	LOUIS D. HAEUSER	COB 259 PG 385 SEPT. 13, 1948	781.2 SQ. FT.
21-6			8,272.5 SQ. FT.
21-5-C-1	BRUNDAGE MINI STORAGE, LTD	COB 3088 PG 70 DEC. 2, 2002	348.0 SQ. FT.
21-4-C-1	WAL-MART REAL ESTATE BUSINESS-TRUST	COB 3098 PG 476 MAY 7, 2003	2,004.0 SQ. FT.
21-3	HARSCO CORPORATION	COB 590 PG 451 MAY 7, 1964	70,009.3 SQ. FT.
21-2	ROBERT F. HECKER, ET AL	COB 2949 PG 707 OCT. 30, 1996	28,413.2 SQ. FT.
RR-21-10			12,259.6 SQ. FT.
RR-21-9			38,351.1 SQ. FT.
RR-21-8	NEW ORLEANS PUBLIC BELT RAILROAD COMMISSION	COB 252 PG 237 MAR. 24, 1948	37,017.7 SQ. FT.
RR-21-7			12,330.1 SQ. FT.
RR-21-1			16,293.9 SQ. FT.
PARCEL	OWNER	ACQUISITION	AREA

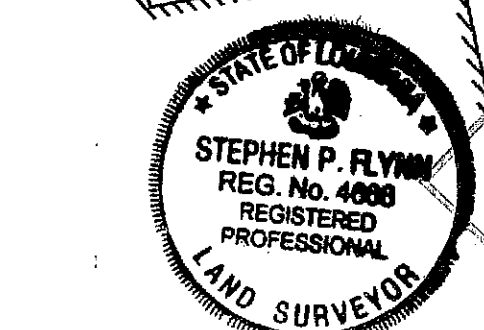
- LEGEND**
- REQUIRED RIGHT OF WAY LINE
 - REQUIRED DRAINAGE SERVITUDE
 - REQUIRED CONTROL OF ACCESS LINE
 - REQUIRED CONSTRUCTION SERVITUDE
 - LOT LINE
 - LIMITS OF CONSTRUCTION
 - EXISTING RIGHT OF WAY LINE
 - INDENTURE 1937

BEARINGS SHOWN HEREON ARE GRID BEARINGS BASED ON THE LOUISIANA STATE PLANE COORDINATE SYSTEM SOUTH ZONE NAD 83 (1992), TO CONVERT FROM GRID BEARINGS TO TRUE BEARINGS, USE $\theta = 0^{\circ}34'38.33''$

TO CONVERT DISTANCES DERIVED FROM COORDINATES SHOWN HEREON TO HORIZONTAL GROUND DISTANCES USE SCALE FACTOR: 0.99992610

NOTE
NOPB RESERVES THE RIGHT TO REVIEW QUALITY CONTROL ON MAPS BEFORE FINAL APPROVAL.

NOTE
THIS RIGHT OF WAY MAP ONLY SHOWS THE AFFECTED AREAS REQUESTED BY LADOTD AND THE TAKING LINES RECEIVED FROM MODJESKI AND MASTERS DATED JUNE 27, 2006.



WAL-MART REAL ESTATE BUSINESS TRUST
TRACT A
R.A. = 941,095 SQ. FT.
ELMWOOD INDUSTRIAL PARK

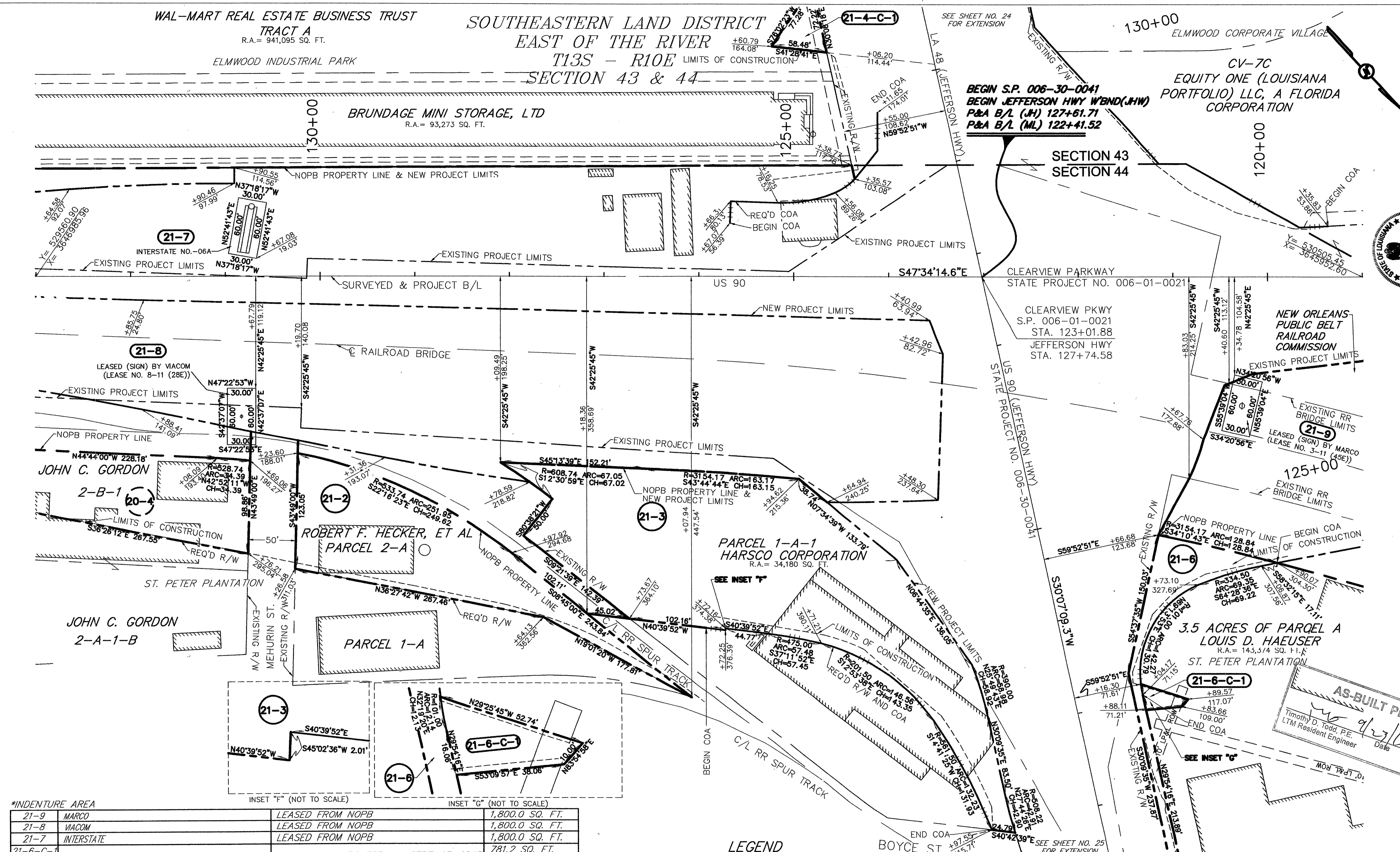
SOUTHEASTERN LAND DISTRICT
EAST OF THE RIVER
T13S - R10E
SECTION 43 & 44

BRUNDAGE MINI STORAGE, LTD
R.A. = 93,273 SQ. FT.

ELMWOOD CORPORATE VILLAGE
CV-7C
EQUITY ONE (LOUISIANA
PORTFOLIO) LLC, A FLORIDA
CORPORATION

BEGIN S.P. 006-30-0041
BEGIN JEFFERSON HWY W/END(JHW)
P&A B/L (JH) 127+61.71
P&A B/L (ML) 122+41.52

SECTION 43
SECTION 44



INDENTURE AREA	OWNER	ACQUISITION	AREA
21-9	MARCO	LEASED FROM NOPB	1,800.0 SQ. FT.
21-8	VIACOM	LEASED FROM NOPB	1,800.0 SQ. FT.
21-7	INTERSTATE	LEASED FROM NOPB	1,800.0 SQ. FT.
21-6-C-1	LOUIS D. HAEUSER	COB 259 PG 385 SEPT. 13, 1948	781.2 SQ. FT.
21-6			8,272.5 SQ. FT.
21-5-C-1	REMOVED		
21-4-C-1	WAL-MART REAL ESTATE BUSINESS TRUST	COB 3098 PG 476 MAY 7, 2003	2,004.0 SQ. FT.
21-3	HARSCO CORPORATION	COB 590 PG 451 MAY 7, 1964	70,009.3 SQ. FT.
21-2	ROBERT F. HECKER, ET AL	COB 2949 PG 707 OCY. 30, 1996	28,413.2 SQ. FT.
RR-21-10			
RR-21-9			
*IN-21-8	REMOVED		
RR-21-7			
RR-21-1			
PARCEL	OWNER	ACQUISITION	AREA

LEGEND

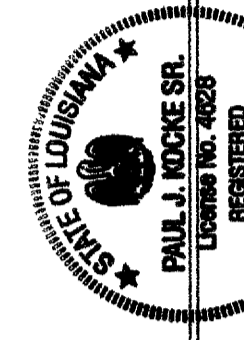
- REQUIRED RIGHT OF WAY LINE
- REQUIRED DRAINAGE SERVITUDE
- REQUIRED CONTROL OF ACCESS LINE
- REQUIRED CONSTRUCTION SERVITUDE
- LEASE LINE
- LIMITS OF CONSTRUCTION
- EXISTING RIGHT OF WAY LINE
- NOPB PROPERTY LINE
- EXISTING PROJECT LIMITS
- NEW PROJECT LIMITS
- TEMPORARY NEW PROJECT LIMITS

THESE RIGHT OF WAY MAPS HAVE BEEN PREPARED AT THE REQUEST OF LOUISIANA TIMED MANAGERS AND ARE REVISIONS OF THE ORIGINAL RIGHT OF WAY MAPS PREPARED BY RIVERLANDS SURVEYING COMPANY, L.L.C. DATED SEPT. 19, 2006.

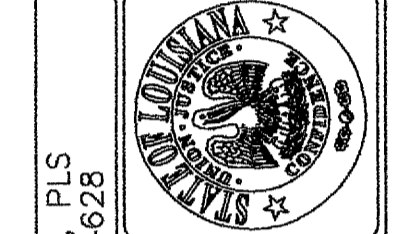
BEARINGS SHOWN HEREON ARE GRID BEARINGS BASED ON THE LOUISIANA STATE PLANE COORDINATE SYSTEM SOUTH ZONE NAD 83 (1992). TO CONVERT FROM GRID BEARINGS TO TRUE BEARINGS, USE

$\theta = 0^{\circ}34'38.33'' \pm$

TO CONVERT DISTANCES DERIVED FROM COORDINATES SHOWN HEREON TO HORIZONTAL GROUND DISTANCES USE SCALE FACTOR: 0.99992610

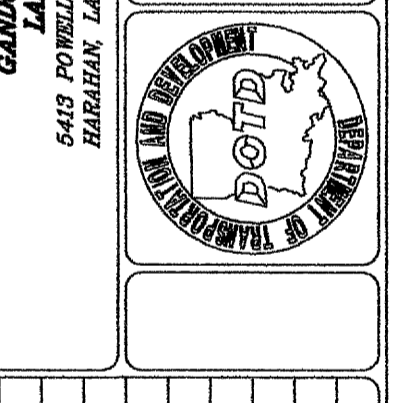


DATE: 07/20/2007
COMPUTED BY: PJK
DRAWN BY: PJK
SCALE: 1"=50'
FILE NO.: 03-17-047
R/W SHEET NO.: 21A



RIGHT OF WAY MAP
STATE PROJECT NO. 006-01-0021 & 006-03-0041
HUEY P. LONG BRIDGE WIDENING
U.S. 90
WESTBANK & EASTBANK APPROACH
JEFFERSON PARISH

GLADSTONE RYAN, L.L.C.
LAND SURVEYORS
6419 POWELL STREET
HARRISBURG, LA 70129 504-948-8811 FAX



AS-BUILT PLANS
Timothy D. Todd, P.E.
LTM Resident Engineer
Date: 9/23/10

DATE	DESCRIPTION	BY
JAN 7, 08	REMOVE PARCEL 21-5-C-1, & REV. COA	PJK
JAN 3, 08	REV. BEARINGS FOR PARCELS 21-8 AND 21-9	PJK
OCT 22, 07	ADDED STA & OFFSET FOR PARCEL 21-8	PJK

S:\Land Projects_R2\LDwg\11490_R0V.dwg, 11490_R0V_EB-08072006.dwg 9/18/2006 1:51:08 PM CDT

SOUTHEASTERN LAND DISTRICT
EAST OF THE RIVER
T13S - R10E
SECTION 43 & 44

ELMWOOD CORPORATE VILLAGE

SURVEYED &
PROJECT B/L
CURVE DATA
PI = 112+37.03
Δ = 29°42'40.9"
D = 5'43'46.5"
T = 265.25'
L = 518.56'
R = 1000'
Y=530960.80
X=3645454.44

CV-7C
EQUITY ONE (LOUISIANA
PORTFOLIO) LLC, A FLORIDA
CORPORATION

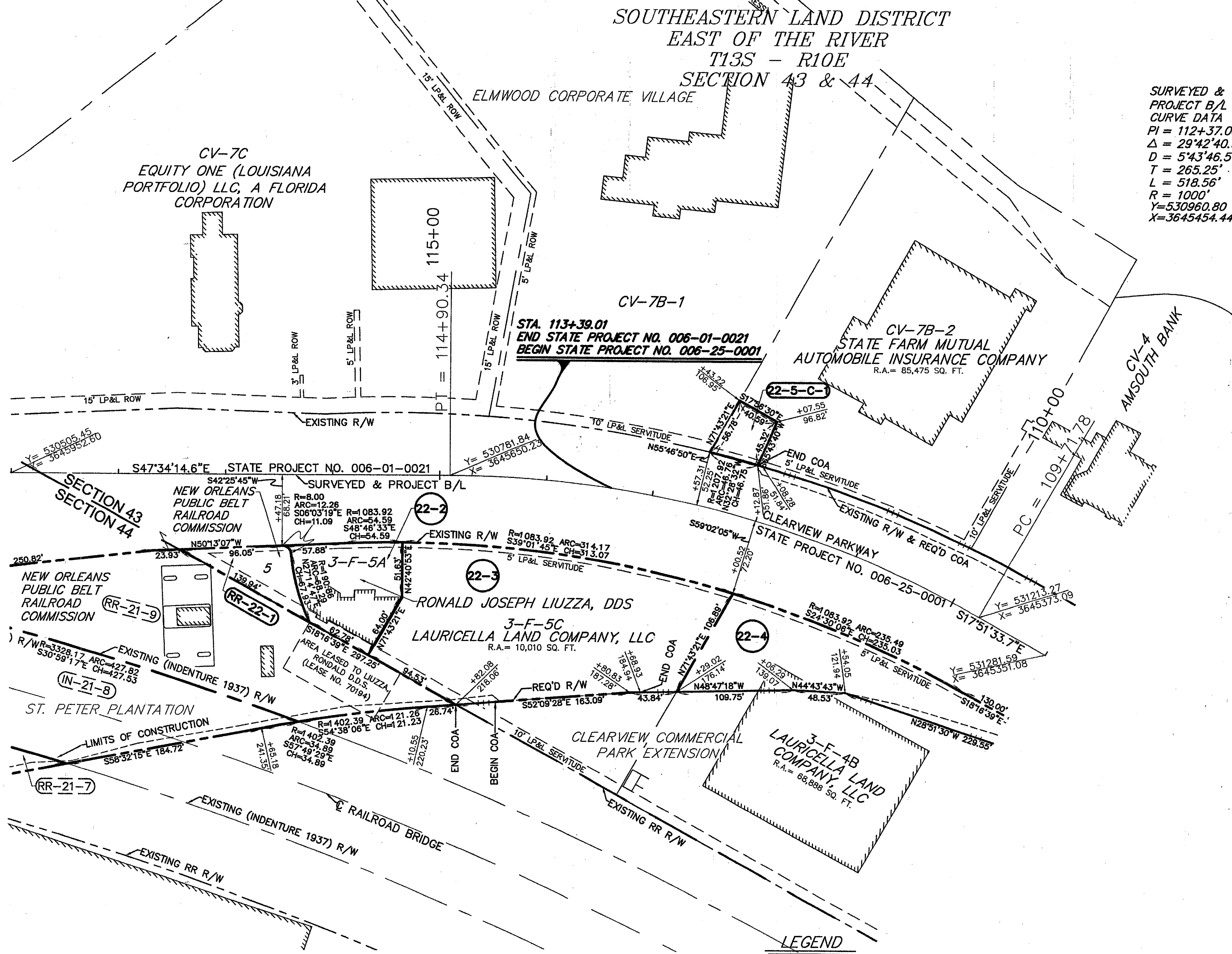
115+00

CV-7B-1

STA. 113+39.01
END STATE PROJECT NO. 006-01-0021
BEGIN STATE PROJECT NO. 006-25-0001

CV-7B-2
STATE FARM MUTUAL
AUTOMOBILE INSURANCE COMPANY
R.A. = 85,475 SQ. FT.

CV-4
AMSOUTH BANK



DATE: 03/30/06	PARISH: JEFFERSON PARISH	STATE PROJECT NO.: 006-01-0021 & 006-25-0001
COMPUTED BY: STEPHEN P. FLYNN, P.L.S.	PROJECT NO.:	
DRAWN BY: JPT	FILE NO.:	
SCALE: 1"=50'	R/W SHEET NO.: 22	



RIGHT OF WAY MAP
STATE PROJECT NO. 006-01-0021 & 006-25-0001
HUEY P. LONG BRIDGE WIDENING
U.S. 90
WESTBANK & EASTBANK APPROACH
JEFFERSON PARISH



AS-BUILT PLANS
Timothy D. Todd, P.E.
LTM Resident Engineer
Date

SEE SHEET 22A

- LEGEND**
- REQUIRED RIGHT OF WAY LINE
 - REQUIRED DRAINAGE SERVIDUTE
 - |-|- REQUIRED CONTROL OF ACCESS LINE
 - REQUIRED CONSTRUCTION SERVIDUTE
 - - - LOT LINE
 - - - LIMITS OF CONSTRUCTION
 - - - EXISTING RIGHT OF WAY LINE
 - INDENTURE 1937

BEARINGS SHOWN HEREON ARE GRID BEARINGS BASED ON THE LOUISIANA STATE PLANE COORDINATE SYSTEM SOUTH ZONE NAD 83 (1992). TO CONVERT FROM GRID BEARINGS TO TRUE BEARINGS, USE
 $\theta = 0^{\circ}34'38.33''$
 TO CONVERT DISTANCES DERIVED FROM COORDINATES SHOWN HEREON TO HORIZONTAL GROUND DISTANCES USE SCALE FACTOR: 0.99992610

NOTE
NOPB RESERVES THE RIGHT TO REVIEW QUALITY CONTROL ON MAPS BEFORE FINAL APPROVAL.
 NOTE
THIS RIGHT OF WAY MAP ONLY SHOWS THE AFFECTED AREAS REQUESTED BY LADOTD AND THE TAKING LINES RECEIVED FROM MODJESKI AND MASTERS DATED JUNE 27, 2006.

*INDENTURE AREA

PARCEL	OWNER	ACQUISITION	AREA
22-5-C-1	STATE FARM MUTUAL AUTOMOBILE INSURANCE COMPANY	COB 1414 PG 277 -FEB. 6, 1986	2,194.1 SQ. FT.
22-4	LAURICELLA LAND COMPANY, LLC	COB 2953 PG 176 DEC. 30, 1996	18,431.1 SQ. FT.
22-3	RONALD JOSEPH LIUZZA, DDS	COB 2912 PG 917 MAR. 13, 1995	38,384.7 SQ. FT.
RR-22-1	NEW ORLEANS PUBLIC BELT RAILROAD COMMISSION	COB 888 PG 808 APR. 4, 1977	8,341.6 SQ. FT.
			3,641.3 SQ. FT.

NO.	DATE	DESCRIPTION	BY
5-25-07		REVISION CONTROL OF ACCESS	PJK

S:\Land Projects R2\ldwgs\11490_RDM.dwg\11490_ROW_EB-08072006.dwg 9/18/2006 1:51:08 PM CDT